

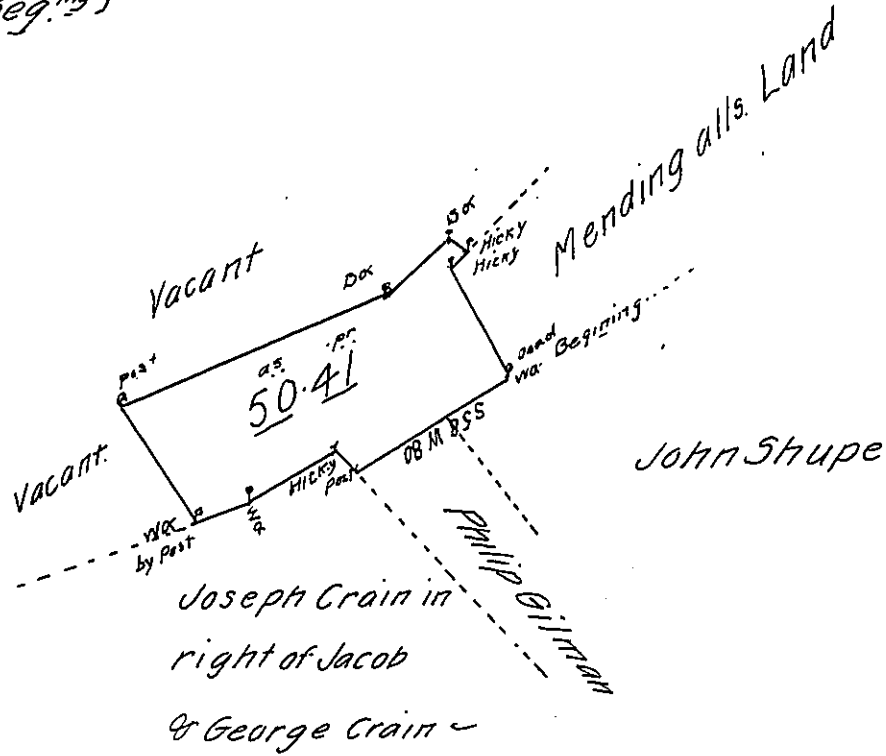
FORM NO. 1.

Course & Distance

from Dead WK. the place of Beg.^{ing}

- 558W 80 a post
- N54½W 11 Hicky
- 557W 42 WK
- 565W 23 ^{wa by} _{post} }
- N35W 57½ Post
- N65E 121 BK
- N50E 42 BK
- S28E 4¼ Hicky
- S32½W 10 Hicky
- S32½E 52 Dead WK.

the place of Beginning



Draught of a Tract of Land Situate in Milford Township Mifflin County Containing Fifty Acres & 41 perches and the Allowance of Six per Cent for Roads &c. Surveyed the 27th Day of October 1800 - for John Shupe Impursuance of a Warrant Dated the 10th Day of January - 1799 -

To Samuel Cochran Esquire
Surv^{er} Gen^l of Pennsylvania.

William Harris D.S.

IN TESTIMONY that the above is a copy of the original remaining on file in the Department of Internal Affairs of Pennsylvania, made conformably to an Act of Assembly approved the 16th day of February 1833, I have hereunto set my hand and caused the Seal of said Department to be affixed at Harrisburg, this nineteenth day of December 1906

Isaac P. Brown
Secretary of Internal Affairs.